

# KUPKA'S FRACTAL PAINTINGS

Porter 34B Winter 2013  
Chaos, Fractals, and the Arts  
Meet #4, 1/29/2013  
Ralph Abraham



# PAINTINGS

- 1910-1912, Amorpha series (12 works)
- 1911-1936, Cosmic Forces (16 works)
- 1923, Diagonal Planes (2 works)

# PAINTINGS (40)

- 1910-1912, Amorpha series (12 works)
- 1910-1913, Cosmic Forces (14 works)
- 1919-1925, Cosmic Forces (13 works)
- 1915, Diagonal Planes (1 work)



# The Amorpha Series

## 1910-1912, 12 Paintings



AMORPHA,  
FUGUE IN TWO  
COLORS, II

1910-1911

*Andel, p. 118.*

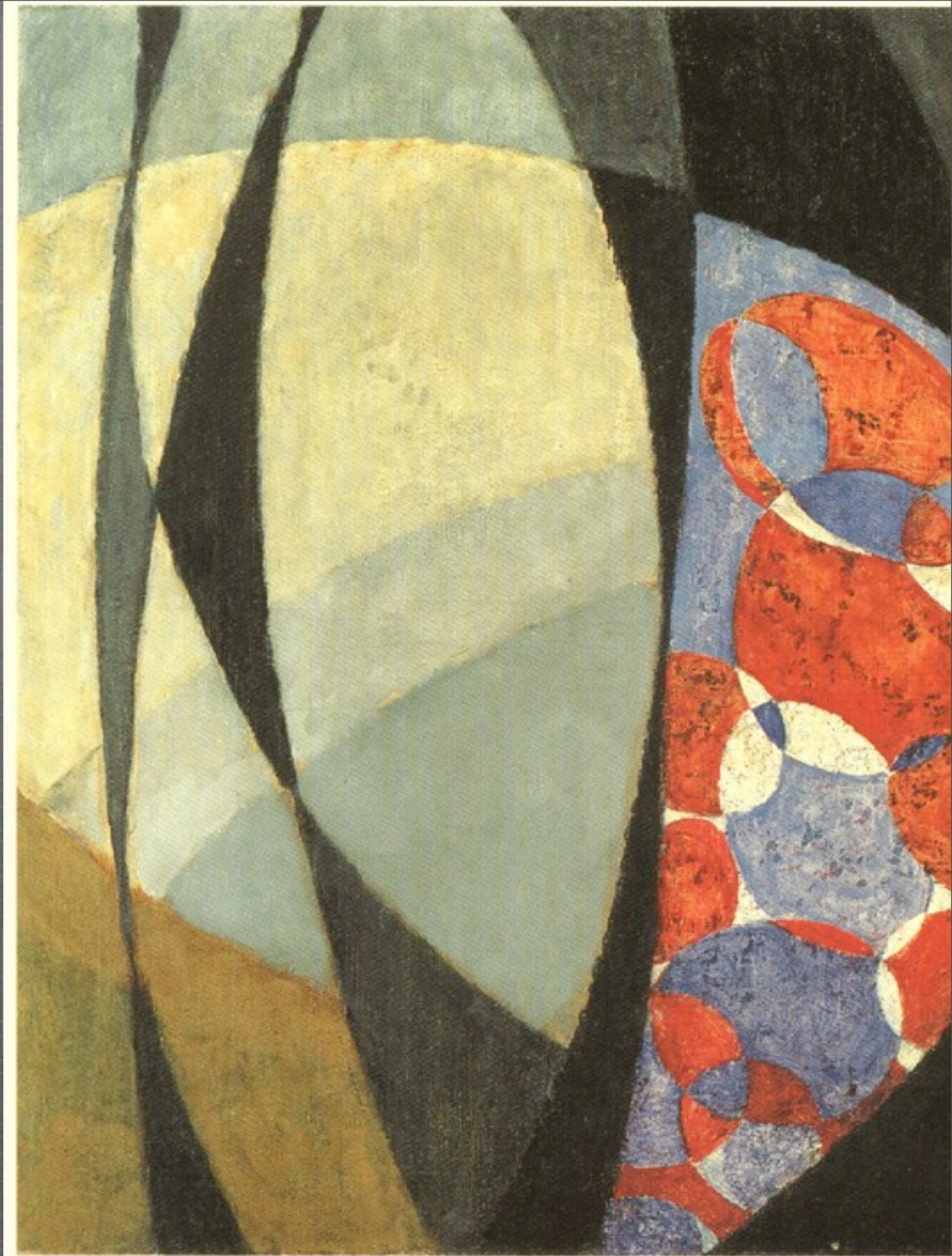




STUDY  
FOR AMORPHA,  
FUGUE IN  
TWO COLORS, I

1911-1912

*Andel, p. 119.*







STUDY FOR AMORPHA, FUGUE IN TWO COLORS, AND  
FOR AMORPHA, WARM CHROMATIC, 1911-1912

*Andel, p. 120*

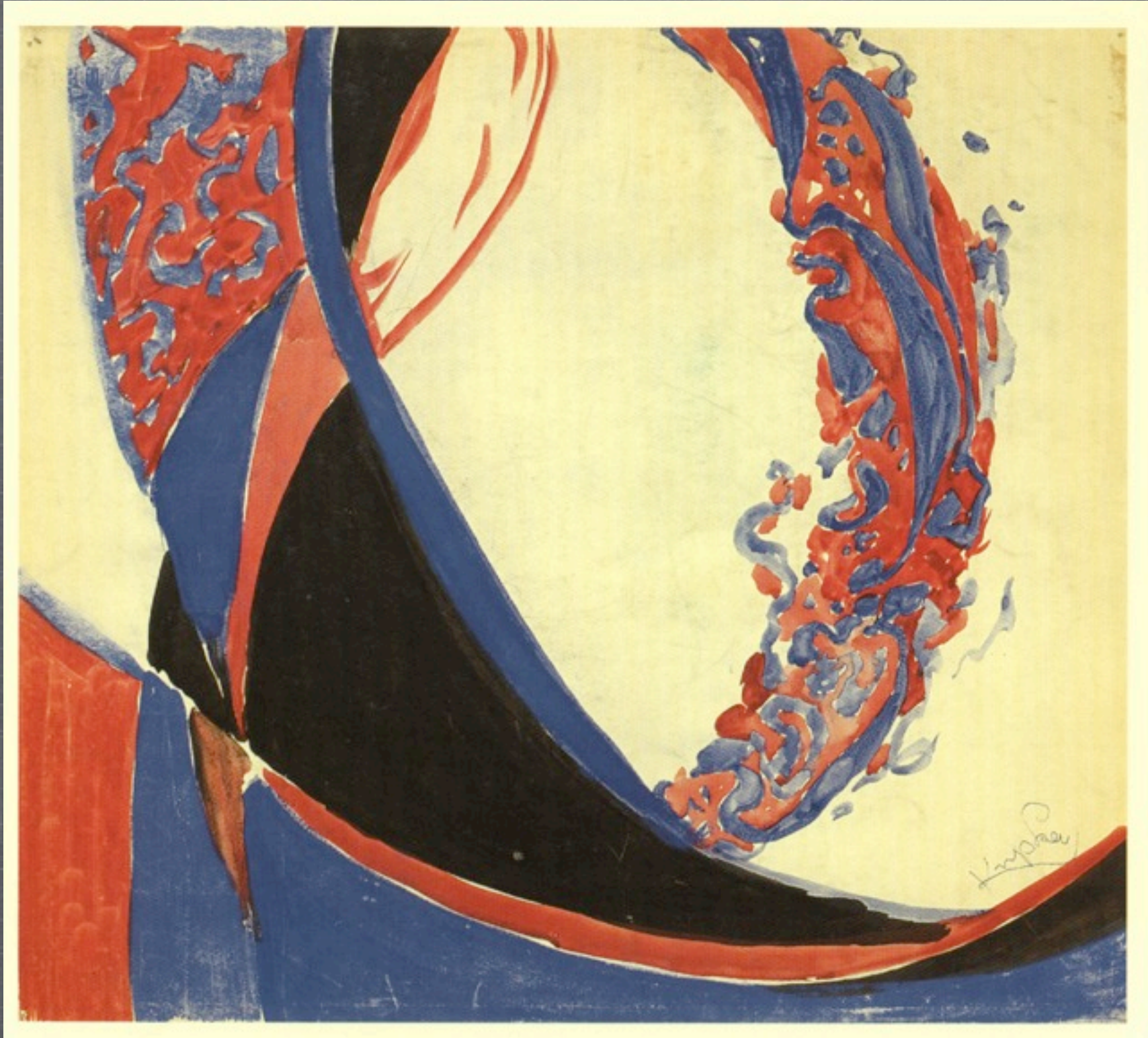




STUDY FOR AMORPHA, FUGUE IN TWO COLORS, 1912

*Andel, p. 121*





STUDY FOR AMORPHA, FUGUE IN TWO COLORS, 1912

*Andel, p. 122*

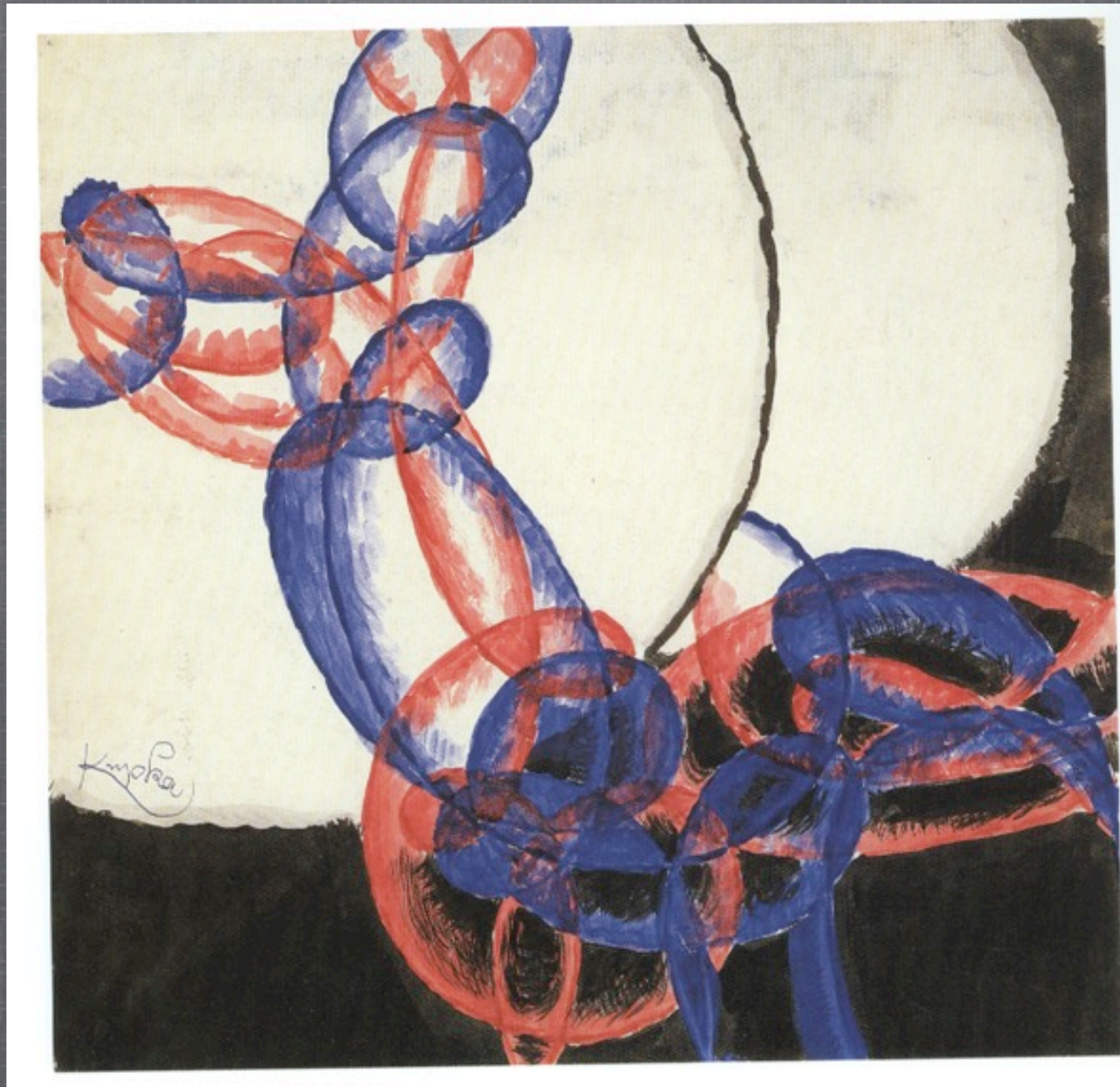




STUDY FOR AMORPHA, FUGUE IN TWO COLORS, 1912

*Andel, p. 123*

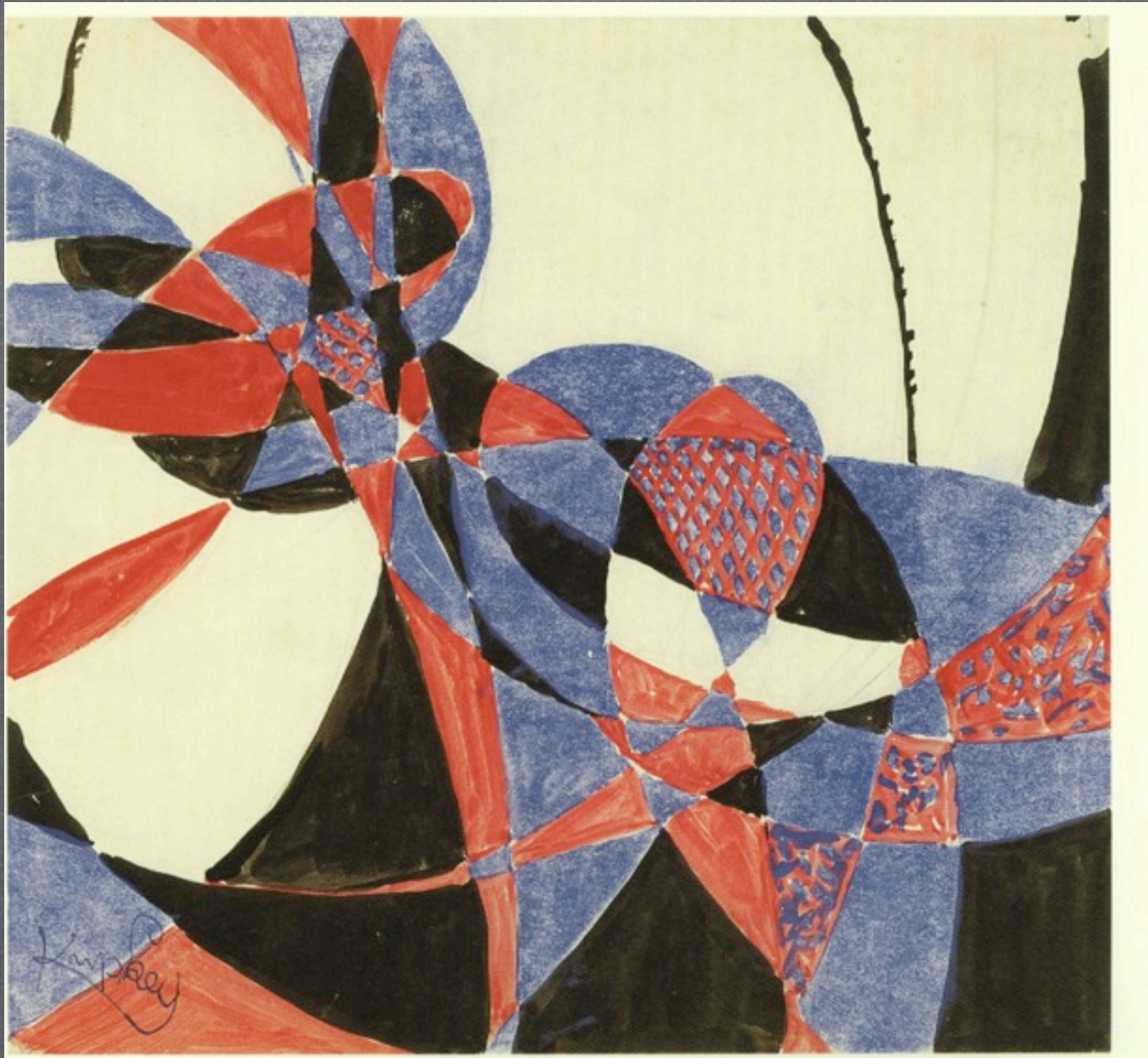




STUDY FOR AMORPHA, FUGUE IN TWO COLORS, 1912

*Andel, p. 124*

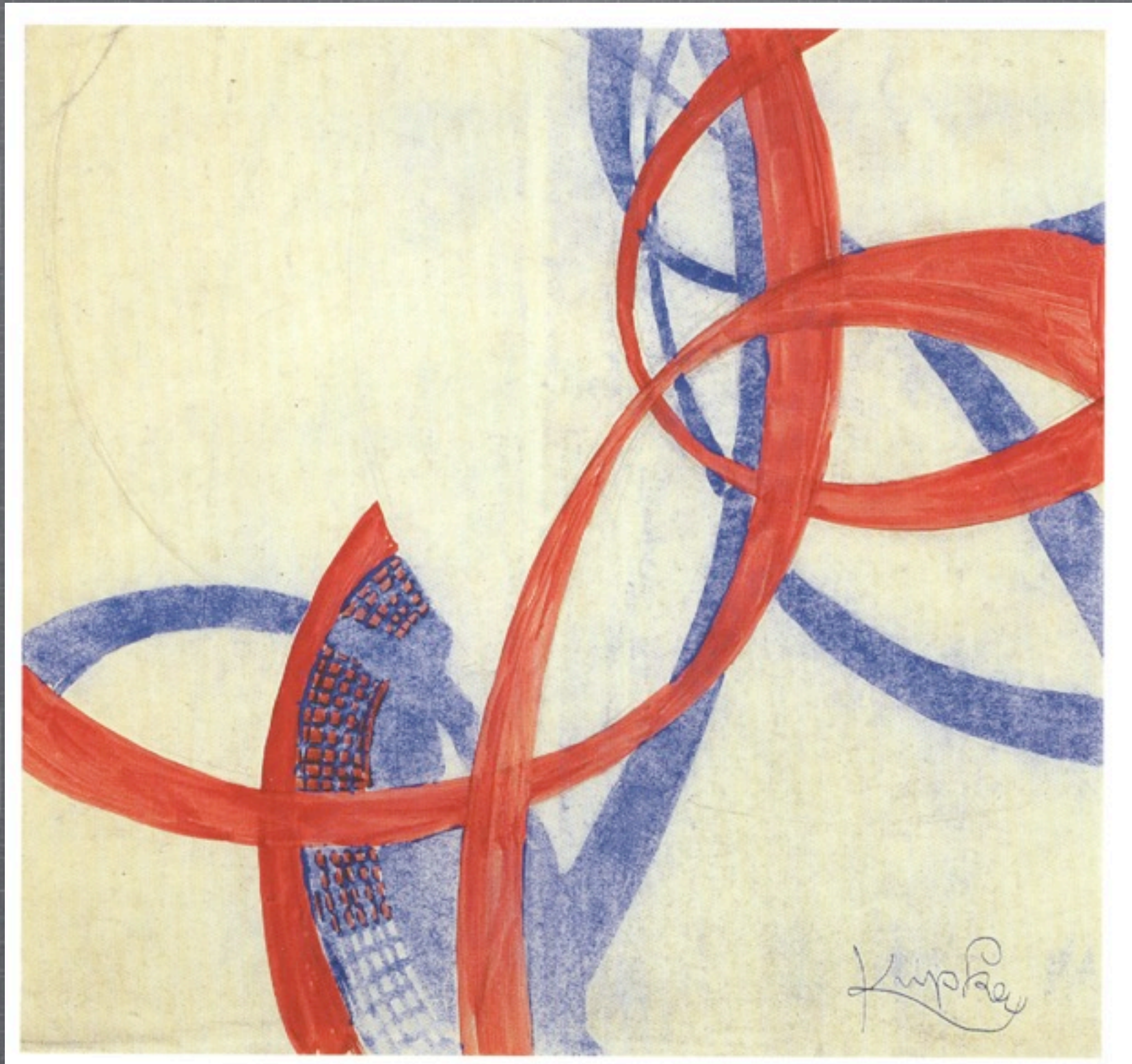




STUDY FOR AMORPHA, FUGUE IN TWO COLORS, 1912

*Andel, p. 125*

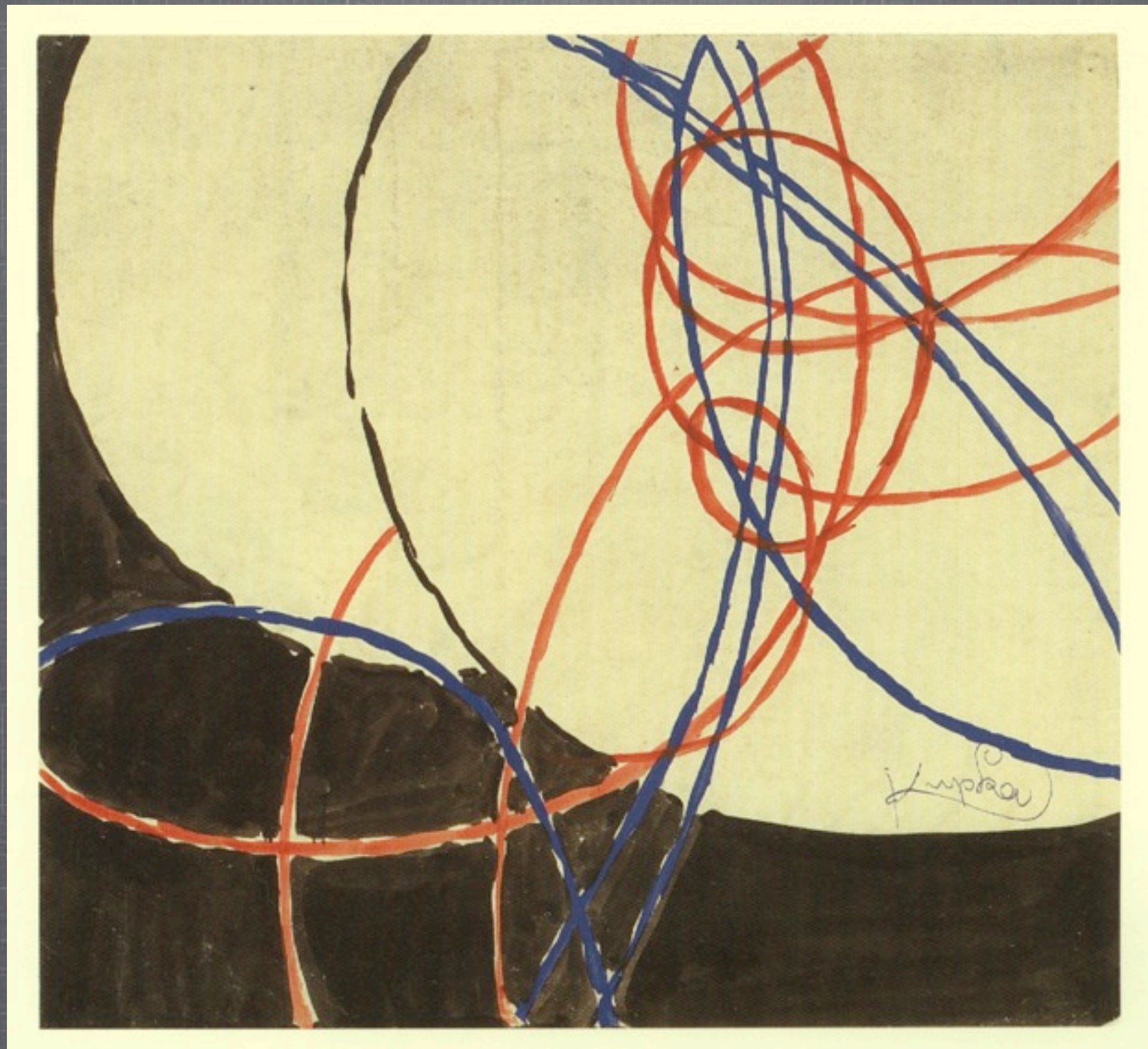




STUDY FOR AMORPHA, FUGUE IN TWO COLORS, 1912

*Andel, p. 126*





STUDY FOR AMORPHA, FUGUE IN TWO COLORS, 1912

*Andel, p. 127*





STUDY FOR AMORPHA, FUGUE IN TWO COLORS, 1912

*Andel, p. 128*





AMORPHA, FUGUE IN TWO COLORS, 1912

*Andel, p. 129*



# Cosmic Forces

## 1910-1913, 14 Paintings

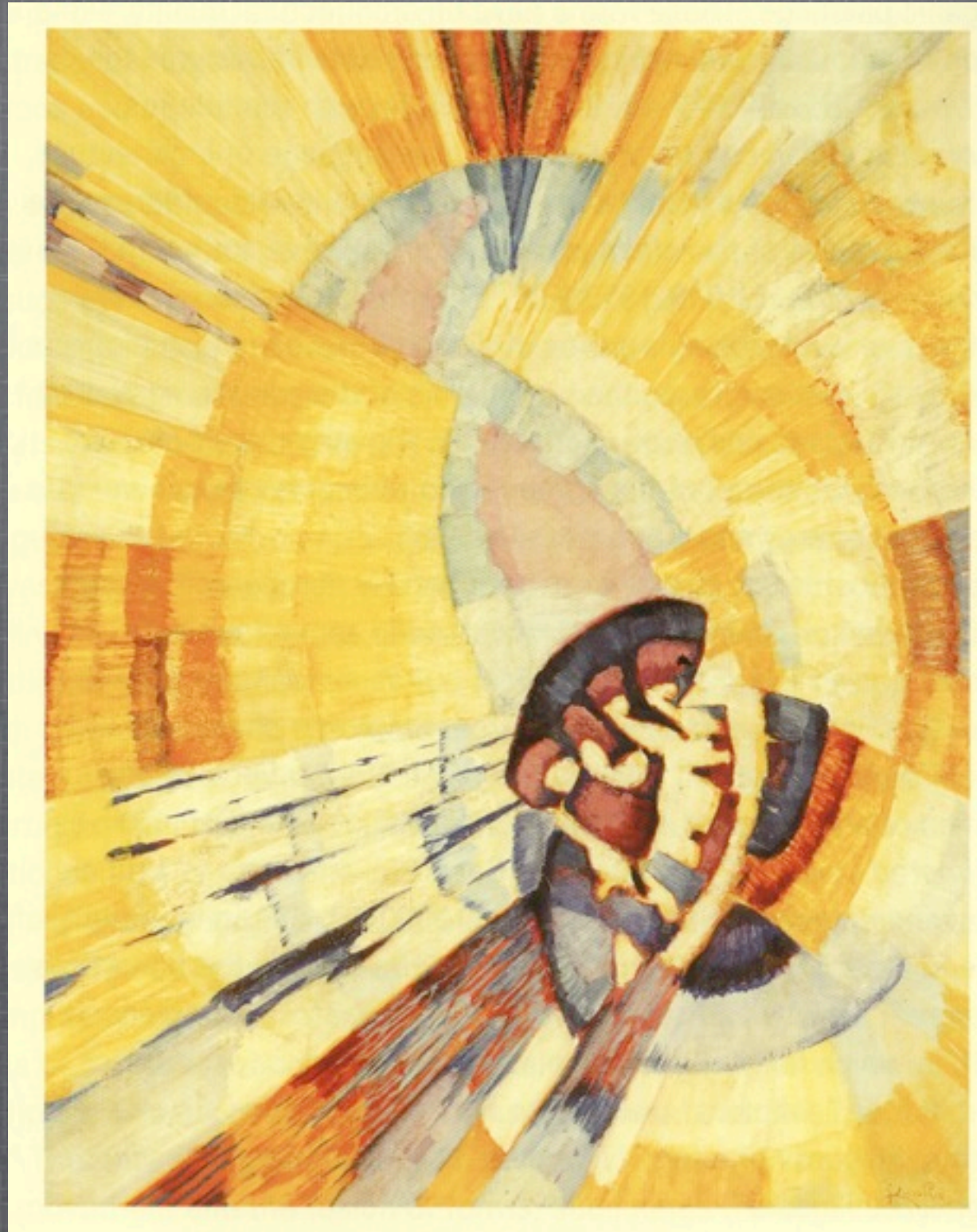




THE PRIMITIVE, 1910-1911

*Andel, p. 183*





FORM OF YELLOW, NOTRE DAME, 1911

*Andel, p. 182*





IRREGULAR FORMS, CREATION, 1911

*Andel, p. 192*

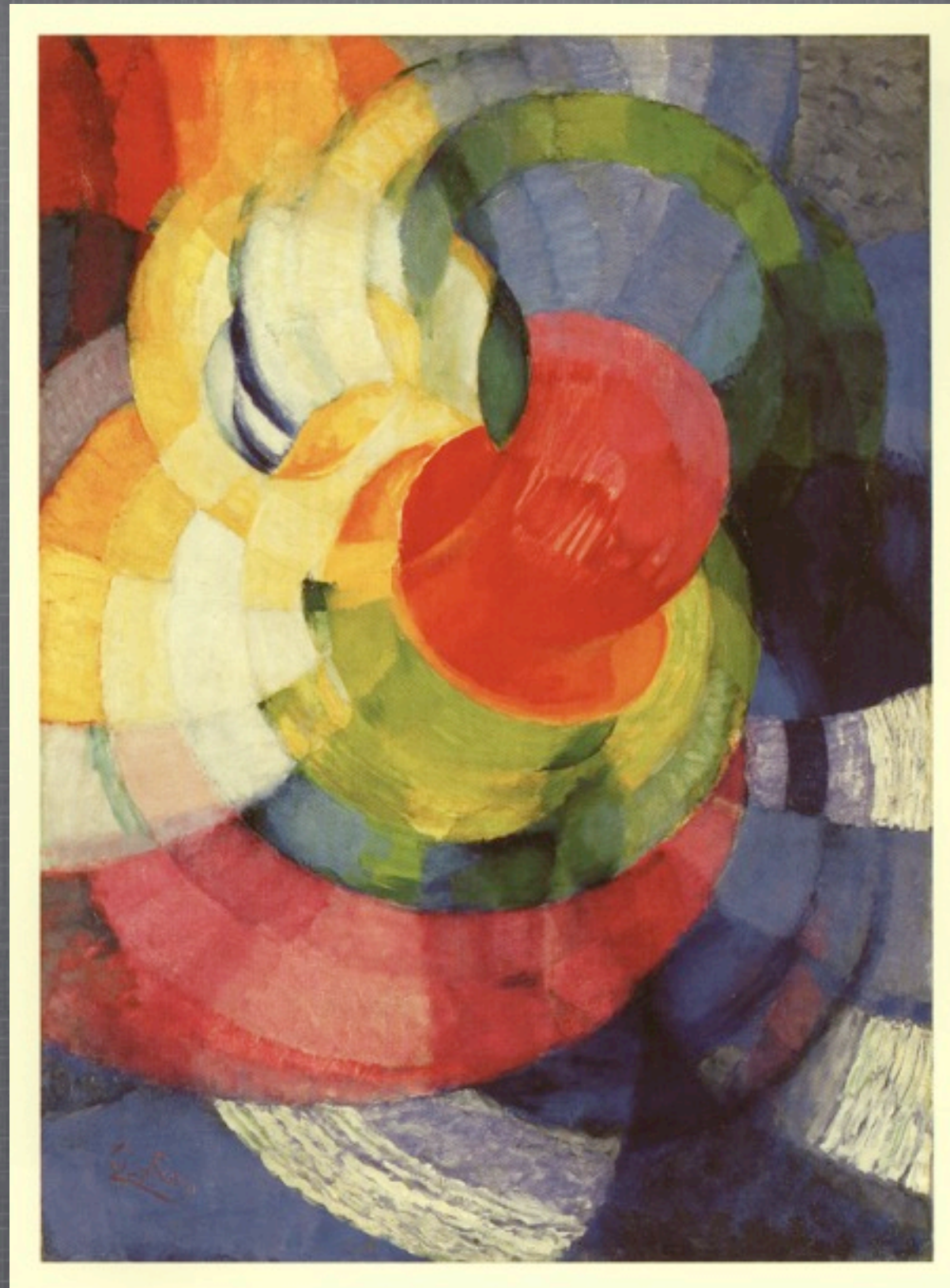




DISCS OF NEWTON, STUDY FOR FUGUE IN TWO COLORS, 1911-1912

*Andel, p. 184*





DISCS OF NEWTON, STUDY FOR FUGUE IN TWO COLORS, 1911-1912

*Andel, p. 185*





CREATION, 1911-1920

*Andel, p. 193*





COSMIC SPRING II, 1911-1923

*Andel, p. 197*





AROUND A POINT, 1911, 1927-1930

*Andel, p. 208*





ORGANIZATION OF GRAPHIC MOTIFS II, 1912-1913

*Andel, p. 195*





SOLO OF A BROWN LINE, 1912-1913

*Andel, p. 202*





RHYTHM, DEBRIS, 1913

*Andel, p. 194*





COSMIC SPRING I, 1913-1914

*Andel, p. 196*





LINES. PLANES, DEPTH III, 1913-1923

*Andel, p. 186*





LINES. PLANES, DEPTH II (ABSTRACT COMPOSITION), 1913-1924

*Andel, p. 187*



# Cosmic Forces

## 1919-1925, 13 Paintings





TALE OF PISTILS AND STAMENS I, 1919 (1923)

*Andel, p. 188*





TALE OF PISTILS AND STAMENS, 1919-1920

*Andel, p. 189*





FLOWERS IN EMBROIDERY, 1925

*Andel, p. 190*





FORM OF ORANGE, 1918-1923

*Andel, p. 191*





UPWARD THRUST, 1922-1923

*Andel, p. 198*





HINDU MOTIFS, RED GRADATIONS, 1919-1920

*Andel, p. 199*





BLUE RIBBED ARCHES II, 1920-1921

*Andel, p. 200*





VIOLET AND YELLOW, REMINISCENCE, 1920-1922

*Andel, p. 203*





ENERGETIC II, 1925-26

*Andel, p. 204*





MOVING BLUES, STORY OF THE ROSE I, 1924

*Andel, p. 205*





MOVING BLUES, REMINISCENCE ESTEREL, 1923-1924

*Andel, p. 206*





MOVING BLUES, 1923, 1928-1936

*Andel, p. 207*





ANIMATED LINES, 1921, 1924-1933

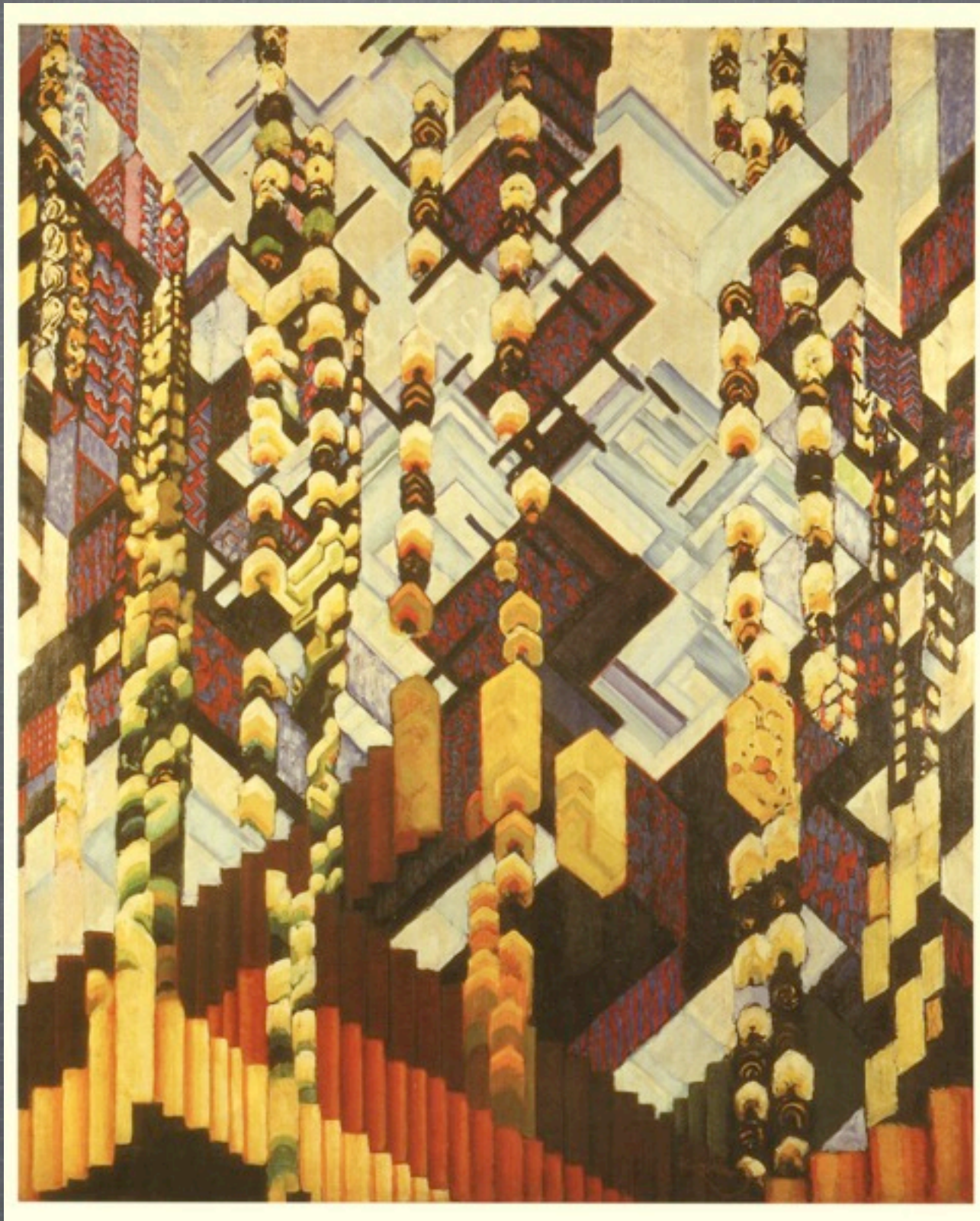
*Andel, p. 209*



# Diagonal Planes

1915, 1 Painting





VERTICAL AND DIAGONAL PLANES, WINTER REMINISCENCES,  
1915-1923

*Andel, p. 147*



# REFERENCE

- Jaroslav Andel and Dorothy Kosinski, eds., 1997.  
*Painting the Universe: Frantisek Kupka, Pioneer in Abstraction*. Dallas Museum of Art.



END